

ICC-DEVICE LINKS ...

... MISSION POSSIBLE!

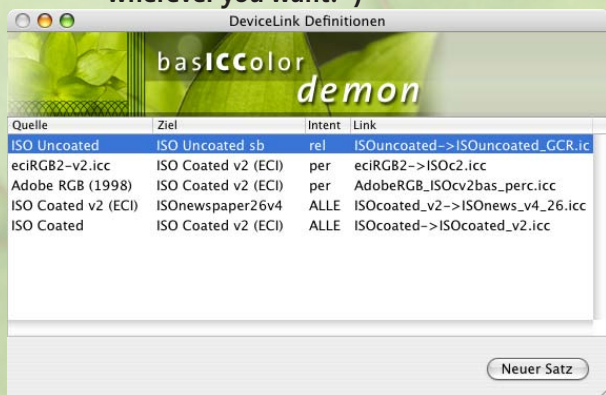


demon

basICColor

input
INbox
display 4
display SQUID2
catch control
catch certify
eye-one catch pro
dropRGB
RGBbox
CMYKick
CMYKbox
print
PROOFbox
DevIL
demon
photoServer
accessories

Use ICC-DeviceLink Profiles –
wherever you want! *)



ICC-DeviceLink-Profiles are becoming more and more popular – but unfortunately they cannot be used in every application. Photoshop for example doesn't know DeviceLink profiles – until now! If you use basICColor *demon*, you enable DeviceLink profiles in any application that lets you choose a CMM! basICColor *demon* allows you to define any number of input and output profile combinations that will then be replaced by DeviceLinks. Photoshop even shows the correct color in preview and then converts your images with high quality ICC DeviceLinks made, for example, with basICColor *DevIL*.

In order to allow you an easy start basICColor *demon* contains 2 ICC DeviceLink profiles: 1 for converting sRGB to ISOcoated_v2 with our specific dynamic gamut compression. 1 for converting from the „old“ offset standard ISOcoated to ISOcoated_v2. The black channel will be maintained, i.e. black type will not be rasterized like in conversions through normal ICC profiles.


An additional benefit of ICC DeviceLinks is the controlled composition of the color and black plates. With heavy GCR you cannot only stabilize your printing process but also save a lot of ink without sacrificing printing quality. basICColor *demon* can handle all kinds of ICC-DeviceLinks, regardless of manufacturer or color space. Thus fine art printers can convert data from their working space to inkjet printer space, pre-press can create high quality proofs that have so far been restricted to proprietary proofing systems. Printers can convert data from one printing condition to another without affecting the separations.

*) Precondition: selectable CMM in the application

Features:

- ▶ basICColor *demon* replaces ICC profiles with ICC DeviceLinks
- ▶ basICColor *demon* can be used in all programs, that allow to choose a CMM (e.g. all Adobe CS programs)
- ▶ Simple handling with presets
- ▶ You even get a copy of the Adobe CMM with basICColor *demon*!

System Requirements (minimum):

- ▶  Mac OS X 10.4

- ▶ Color monitor, video card 24 bit, CM-enabled application software with selectable CMM

Products, Bundles and Options:

- ▶ basICColor *demon* with Adobe CMM and 2 ICC DeviceLinks
- ▶ basICColor *demon+* with Adobe CMM and 12 ICC DeviceLinks

- ▶ basICColor *DevIL* with basICCoolTool The Missing Link

- ▶ basICColor *CMYKbox* for ICC profile creation

- basICColor *CMYKick*, basICColor *catch*
- basICColor *display 4*, 3 seats, gray card mini
- 3 basICCoolTools

- ▶ basICColor *in catch pro*

- Spectrophotometer
- basICColor *catch pro* software for densitometric, colorimetric, and spectral measurements

- ▶ Technical Support Agreement (TSA)

provides 12 months of e-mail and telephone support from our basICCare Center, and free product updates (for any number of seats).

Please refer to the price list on www.basICColor.de

All published specifications and services are provided "As Is" without warranty of any kind and subject to change without notice.
Please ask for volume and educational discounts!



 colorsolutions
Falkenstraße 15a
D-82377 Penzberg
info@color-solutions.de
Tel.: +49-(0)8856 93 25 05